

атало прод к ии Teledoor

По вопросам продаж и поддержки обращайтесь:

Алматы (7273)495-231
Ангарск (3955)60-70-56
Архангельск (8182)63-90-72
Астрахань (8512)99-46-04
Барнаул (3852)73-04-60
Белгород (4722)40-23-64
Благовещенск (4162)22-76-07
Брянск (4832)59-03-52
Владивосток (423)249-28-31
Владикавказ (8672)28-90-48
Владимир (4922)49-43-18
Волгоград (844)278-03-48
Вологда (8172)26-41-59
Воронеж (473)204-51-73
Екатеринбург (343)384-55-89

Иваново (4932)77-34-06
Ижевск (3412)26-03-58
Иркутск (395)279-98-46
Казань (843)206-01-48
Калининград (4012)72-03-81
Калуга (4842)92-23-67
Кемерово (3842)65-04-62
Киров (8332)68-02-04
Коломна (4966)23-41-49
Кострома (4942)77-07-48
Краснодар (861)203-40-90
Красноярск (391)204-63-61
Курск (4712)77-13-04
Курган (3522)50-90-47
Липецк (4742)52-20-81

Магнитогорск (3519)55-03-13
Москва (495)268-04-70
Мурманск (8152)59-64-93
Набережные Челны (8552)20-53-41
Новокузнецк (3843)20-46-81
Ноябрьск (3496)41-32-12
Новосибирск (383)227-86-73
Омск (3812)21-46-40
Орел (4862)44-53-42
Оренбург (3532)37-68-04
Пенза (8412)22-31-16
Петрозаводск (8142)55-98-37
Псков (8112)59-10-37
Пермь (342)205-81-47

Ростов-на-Дону (863)308-18-15
Рязань (4912)46-61-64
Самара (846)206-03-16
Санкт-Петербург (812)309-46-40
Саратов (845)249-38-78
Севастополь (8692)22-31-93
Саранск (8342)22-96-24
Симферополь (3652)67-13-56
Смоленск (4812)29-41-54
Сочи (862)225-72-31
Ставрополь (8652)20-65-13
Сургут (3462)77-98-35
Сыктывкар (8212)25-95-17
Тамбов (4752)50-40-97
Тверь (4822)63-31-35

Тольятти (8482)63-91-07
Томск (3822)98-41-53
Тула (4872)33-79-87
Тюмень (3452)66-21-18
Ульяновск (8422)24-23-59
Улан-Удэ (3012)59-97-51
Уфа (347)229-48-12
Хабаровск (4212)92-98-04
Чебоксары (8352)28-53-07
Челябинск (351)202-03-61
Череповец (8202)49-02-64
Чита (3022)38-34-83
Якутск (4112)23-90-97
Ярославль (4852)69-52-93

Россия +7(495)268-04-70

Казахстан +7(7172)727-132

Киргизия +996(312)96-26-47

эл.почта: tod@nt-rt.ru || сайт: <https://teledoor.nt-rt.ru/>



Content

The company	4
Product overview	6
Chiller and freezer cells	8
Chiller and freezer chamber doors	9
Climate and test cells	10
Clean room technology	11
Machine claddings	12
Services	13
Reference projects	14
History	16
Sustainability	18

Providing the right solution for every customer, ...

... along with comprehensive service and excellent quality, has been our most important principle from the beginning. We produce individual and versatile products to satisfy the ever-changing requirements of our customers.

Of course, only the right team can make this happen. Well-qualified employees with good education and training are essential for the quality of our products.

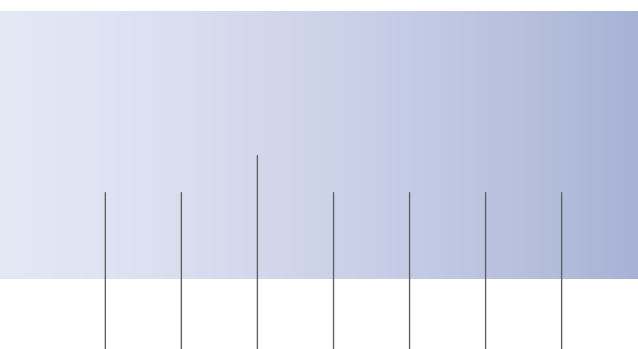
We operate internationally but also feel and experience a special connection to the region and its population. This is why we work together with local suppliers and service providers wherever possible.

These principles have got us through difficult times and keep us looking forward with confidence.

Today, Teledoor can look back on its success story of over thirty years. The company maintains traditional fundamental values and is simultaneously progressive with regard to technology, products and services.

To fulfil your requirements and expectations, a highly-qualified team of experienced engineers and technicians develops proven standard products and exceptional, ambitious custom-made products.

Carefully planned investments and strategic vision have led the company onto a sustainable course of growth and resulted in a global presence, with branches in Moscow and Shanghai.



1985

... for more than 30 years



Something that began
in 1986 in the premises
of an old furniture factory ...



... has developed into a company with over 200 employees,
a production area of approx. 12 000 m² and representation
in Russia and China.

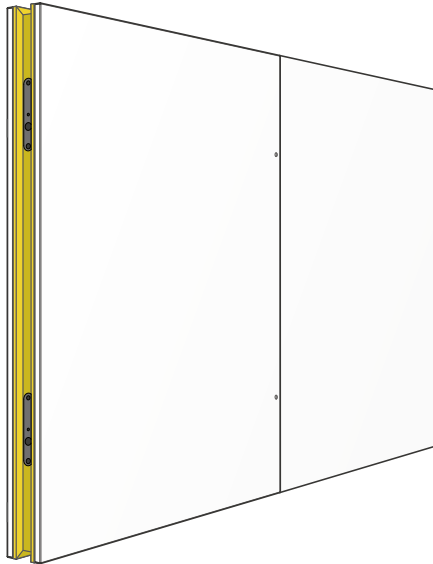
2005

2010

2015

2020

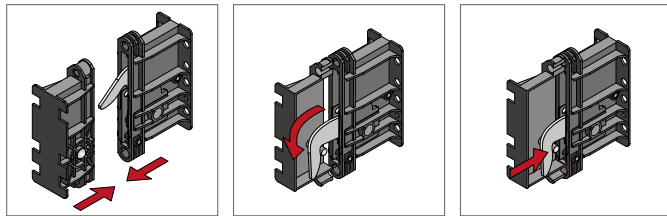
A proven principle for multiple areas of application



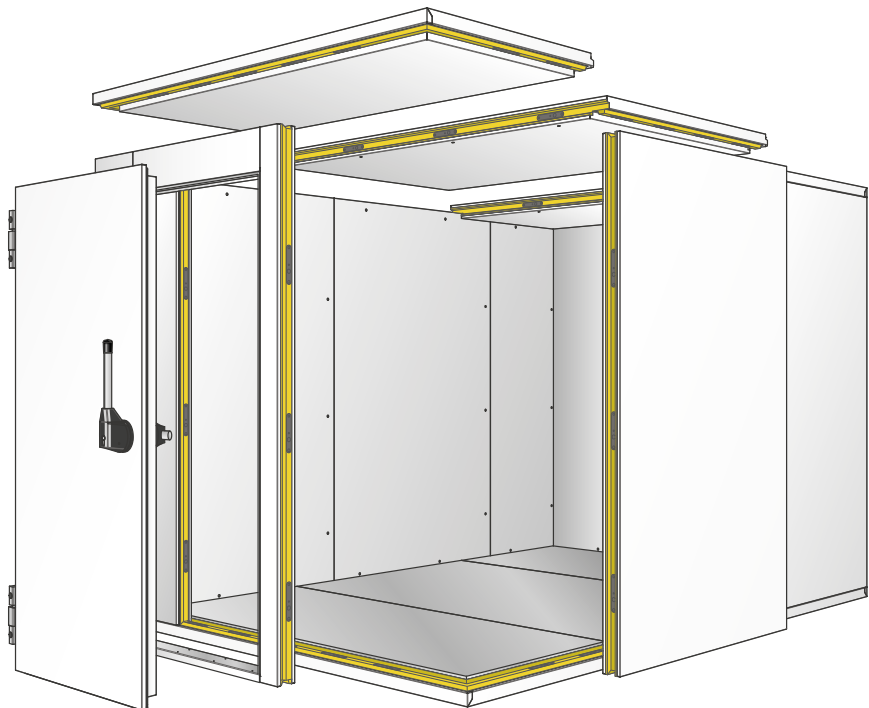
Insulating elements

Complete sandwich elements filled with rigid polyurethane foam in insulation thicknesses of up to 200 mm.

Positive-locking foamed-in hook bolt locks firmly connect the elements together.



Cells are designed and produced using this simple, yet very flexible and thoroughly proven principle, in almost every size and shape, and for a wide range of applications.





Chiller and freezer cells

For everything that needs to be chilled or frozen:
Food, drinks and even medicines or blood reserves.

Chiller and freezer chamber doors

Insulating doors for chiller and freezer chambers in
various sizes and insulation thicknesses.



Climate and test cells

Gas-tight welded cells for product testing under
various environmental conditions.

Clean room technology

Clean rooms according to DIN 14644-1 for applica-
tions in the pharmaceutical or electronics industry.



Machine claddings

Claddings for temperature-controlled production
lines in the food industry.

Chiller and freezer cells

From individual items to series production

- Complete sandwich elements filled with rigid polyurethane foam
- Thermal bridge-free tongue and groove connections
- Modular construction for standard sizes and any special sizes and shapes as custom-made items
- For temperatures from -30° to $+25^{\circ}\text{C}$
- Insulation thicknesses 80, 100, 120, and 160 mm
- Surfaces made from stainless steel or plastic-coated steel sheeting



Chiller and freezer chamber doors

Ready-to-install door units, easy assembly

- Complete door panels filled with rigid polyurethane foam
- Revolving door and sliding door versions
- For temperatures from -30° to $+25^{\circ}\text{C}$
- Insulation thicknesses 60, 80 and 120 mm
- Frames for various assembly situations
- Surfaces made from stainless steel or plastic-coated steel sheeting
- Standard and special sizes

Plus:

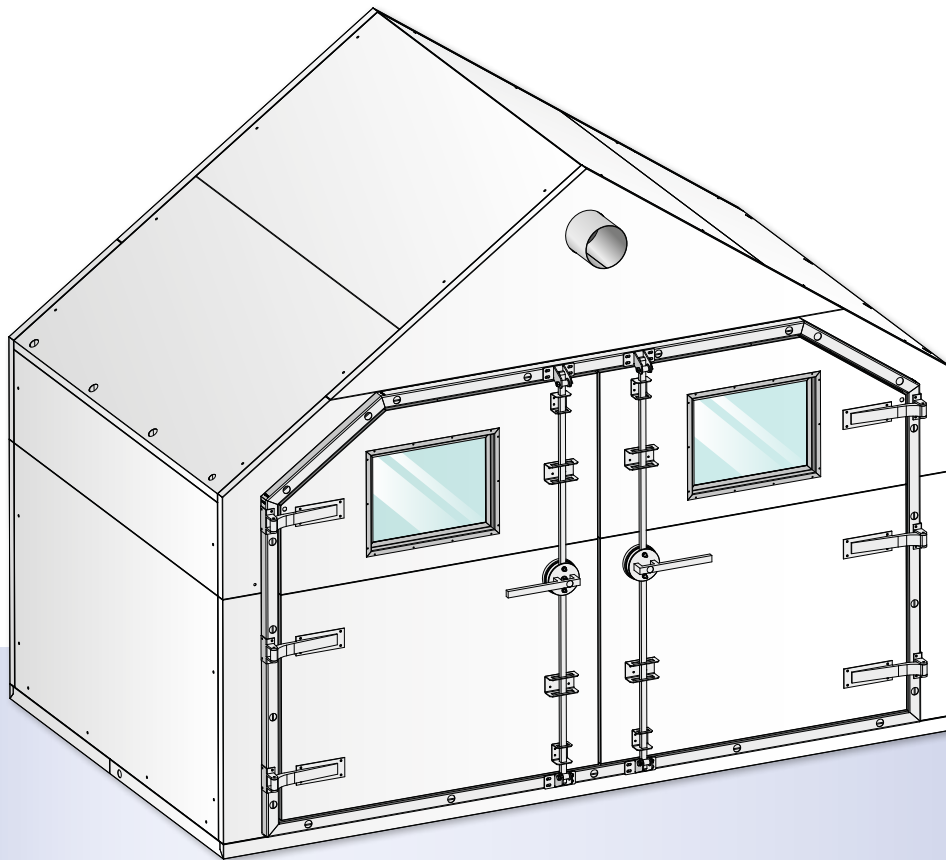
- Hatches and flaps
- Service room doors
- Swing doors
- Strip curtains
- Glass doors



Climate and test cells

For product testing under various environmental conditions

- Complete sandwich elements filled with rigid polyurethane foam
- Above + 80° with an additional layer made from fireproof mineral wool
- Welded standard tongue-and-groove connections free from the thermal bridge effect
- Individual manufacture in almost any size and shape
- For temperatures from – 110° to + 130°C and up to 98% humidity
- Insulation thicknesses: 80, 120, 160 and 200 mm
- Interior surfaces: Stainless steel
- Exterior: Stainless steel or plastic-coated steel sheeting
- Individual openings, and for measuring technology and media passages
- Foamed-in cable ducts
- Gas-tight built-in doors, gates, hatches and viewing windows
- Sloped floors with welded-in outlets



Clean room technology

Individual comprehensive solutions from a single source

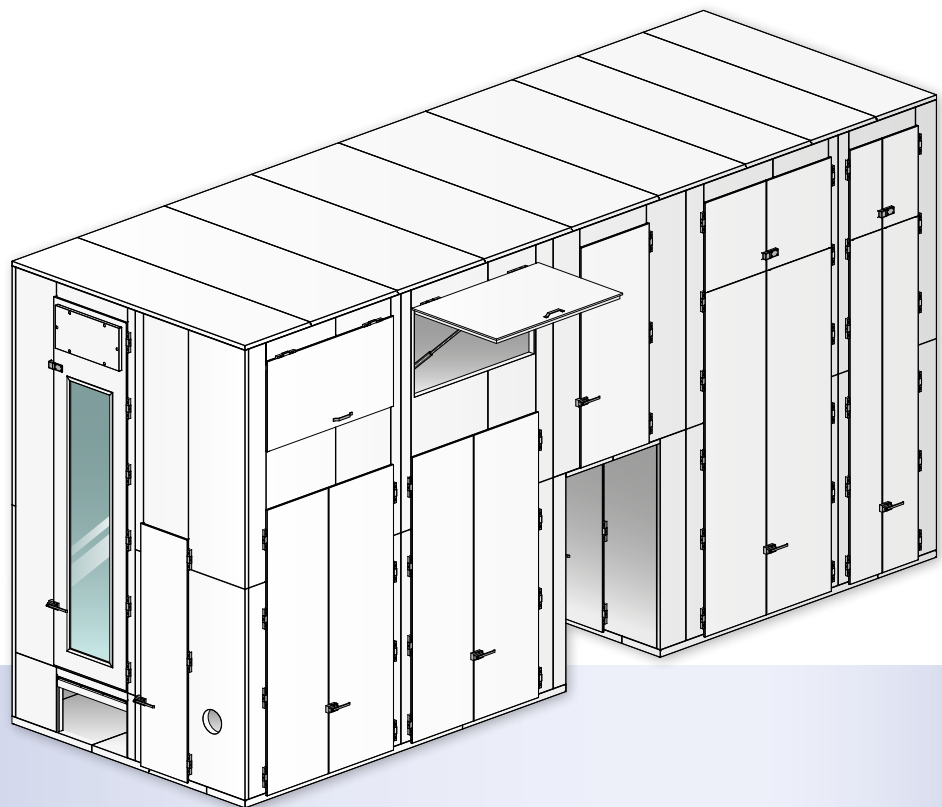
- Complete sandwich elements filled with rigid polyurethane foam
- Tightly sealed tongue-and-groove connections
- Individual manufacture of clean rooms in almost any size and shape
- Insulation thicknesses 80 and 100 mm
- Surfaces made from galvanised plastic-coated steel sheeting
- Clean room classes in accordance with DIN 14644-1
- All from one single source - from planning to final assembly on location
- With complete climate control and ventilation technology, as well as electrical installation
- Foamed-in cable and ventilation ducts mounted flush with the wall and ceiling elements
- Flush-mounted built-in doors, hatches and viewing windows
- Sluices for people and materials



Machine claddings

Claddings for temperature-controlled production lines in the food industry

- Complete sandwich elements filled with rigid polyurethane foam
- Easy-to-clean tongue-and-groove connections free from the thermal bridge effect
- Individual manufacture in almost any size and shape
- For temperatures from -40° to $+60^{\circ}\text{C}$
- Insulation thicknesses: 80, 120 and 160 mm
- Surfaces: Stainless steel or plastic-coated steel sheeting
- Optional soundproofing surface
- Inspection window made from Makrolon panels



Your advantage – our experience

Benefit from over thirty years experience in insulation technology

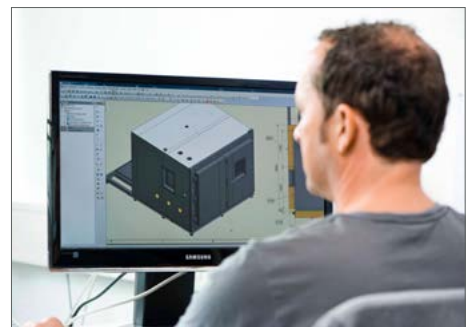


Consultation

We understand that the foundations for a good end product are already laid down in the initial stages of the project. That's why we don't primarily consider our sales and construction employees as sales people, but as consultants. Our team guides you from the beginning to the end, and relies on long-standing experience in all areas.

Construction

The most up-to-date software, automated processes and optimised project implementation are our maxims. At the same time, it is important that our construction department can also think for itself and react to customer changes in a quick and flexible manner. The employees work closely with our customer consultants and the production management team.



Manufacture

CAD-supported workstations and CNC-controlled machinery are used to create your individual product in the shortest possible time and with high quality and accuracy of fit. When purchasing, we access a large network of long-standing partners. All of this ensures the quality that sets Teledoor products apart from the rest.

Assembly and service

We support our partners even post-production, and provide detailed documentation. Would you like us to carry out the assembly? No problem - we will provide you with our own, optimally-trained staff and will be happy to prepare you a corresponding quote. Upon request, we will also take over maintenance of the systems and, if required, the delivery of spare parts.



Reference projects

Antarctic Station Neumayer III

Teledoor produced the exterior insulation for Antarctic research station Neumayer III. The station is almost 70 metres long, around 27 metres wide, and has a total height of about 22 metres. The heated portion of the station is over 1850 m² in size over three floors. Our plant produced all insulating elements to precise dimensions, down to the centimetre, and they were then delivered to Antarctica by ship for installation there. The exterior shell withstands temperatures down to – 48 °C and wind speeds of up to 133 km/h.



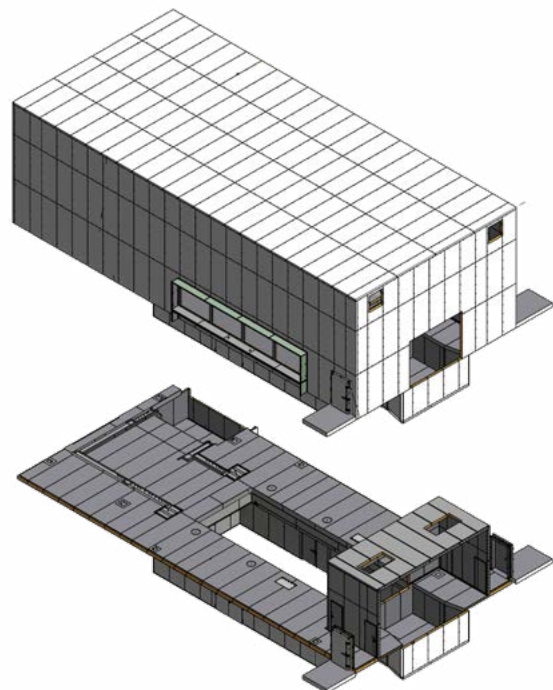
Clean room in DESY

This class 7 clean room system has been installed at the »DESY« (Deutsches Elektronen-Synchrotron) in Hamburg since 2018, and has a total length of over 60 metres and a width of 12 metres. Electronic measuring instruments for particle research experiments are assembled in two different assembly halls in a total area of 734 m², under the cleanest possible conditions.



Wind tunnel for Great Wall Motors

This wind tunnel for the company Great Wall Motors is located in Baoding, in the Chinese province of Hebei. It is over 30 metres long, around 18 metres wide and over 10 metres tall. Teledoor produced the insulation coating on the wind tunnel, which is designed for temperatures from – 48 °C to + 60 °C and wind speeds of up to 250 km/h.



History

1986 The company is founded and begins producing insulated doors for refrigerated and freezer rooms in a space rented in an old furniture factory in Melle. Three employees, one office, 1,600 m² of production space and a few used machines.

1987 Addition of complete refrigerated cells and special insulation to the product portfolio. Expansion of production and storage space by 1,200 m².

1992 Purchase of a plate shear and a press brake. 60 employees and the first office administrator trainee.



Production in 1986

1993 The sales office in Moscow is opened.

1994 The company moves to a new building with 3,600 m² of warehouse space, 700 m² of office and social area, a 15,000 m² property in Melle-Wellingholzhausen.

Purchase of a used punch nibbler machine »Trumatic 235«.

1997 The first fine mechanic apprentice.



Antarctic Station Neumayer III

1999 Purchase of a program-mable punch nibbler machine connected to the CAD system.

2001 Purchase of a foam press with dimensions of 6.4 x 2.4 m, incl. foaming machine.

2002 The sales office in Shanghai is opened.

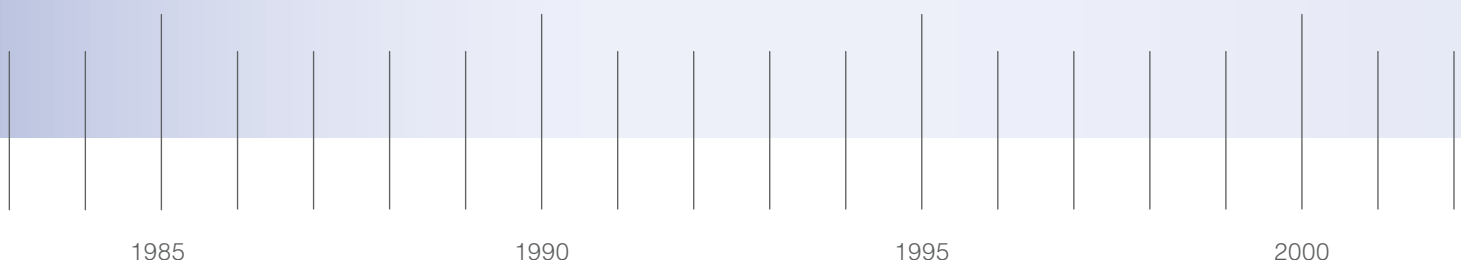
2003 Conversion of the first design work station from 2D-CAD to 3D-CAD.

2006 Veit Bowenkamp joins the company as a shareholder and Managing Director.

Company facilities expanded by 10,000 m².



Plant grounds in China



2007 Production area expanded by 1,800 m² to a total of 5,400 m².

Delivery and installation of the complete exterior shell of the new German Antarctic research station Neumayer III.

2008 Purchase of a foam press with dimensions 1.2 x 7 m, incl. foaming machine.

2009 Purchase of the automatic bending centre »Salvagnini P4«.



Salvagnini sheet metal processing

2010 Expansion of the bending centre with a »Salvagnini S4« punch to create an automatic sheet metal production line connected to CAD.

2011 25-year company anniversary with a total of 105 employees, 10 of them trainees.

2012 New expansion of the production warehouse.

2013 Purchase of the »Trumatic« 2D laser with tube cutting laser.

2013/14 Construction of a tank depot and additional office and social spaces.



Modern foam presses

2016 Expansion of production area to a total of approx. 12,000 m². Commissioning of a new foam press.

2017 Founding of a subsidiary in China with its own production area of approx. 600 m².

2019/20 Set-up and commissioning of a fully automatic storage area approx. 300 m² in size for standard insulating elements.

Expansion of the administrative wing with an additional floor. 300 m² in size.



Plant grounds 2018

2005

2010

2015

2020

Thinking about tomorrow today

We have a simple reason for putting our environmental approach to the test: our beliefs!

As a global player, we also understand that sustainability doesn't stop at home, but starts there.

- We meet our electricity requirements exclusively through renewable energies.
- We use a photovoltaic facility to generate a proportion of our energy ourselves.
- We use the waste heat from our production facilities.
- Economical and long-lasting LED technology is used to light up the factory buildings and outdoor facilities.



По вопросам продаж и поддержки обращайтесь:

Алматы (7273)495-231
Ангарск (3955)60-70-56
Архангельск (8182)63-90-72
Астрахань (8512)99-46-04
Барнаул (3852)73-04-60
Белгород (4722)40-23-64
Благовещенск (4162)22-76-07
Брянск (4832)59-03-52
Владивосток (423)249-28-31
Владикавказ (8672)28-90-48
Владимир (4922)49-43-18
Волгоград (844)278-03-48
Вологда (8172)26-41-59
Воронеж (473)204-51-73
Екатеринбург (343)384-55-89

Иваново (4932)77-34-06
Ижевск (3412)26-03-58
Иркутск (395)279-98-46
Казань (843)206-01-48
Калининград (4012)72-03-81
Калуга (4842)92-23-67
Кемерово (3842)65-04-62
Киров (8332)68-02-04
Коломна (4966)23-41-49
Кострома (4942)77-07-48
Краснодар (861)203-40-90
Красноярск (391)204-63-61
Курск (4712)77-13-04
Курган (3522)50-90-47
Липецк (4742)52-20-81

Магнитогорск (3519)55-03-13
Москва (495)268-04-70
Мурманск (8152)59-64-93
Набережные Челны (8552)20-53-41
Новокузнецк (3843)20-46-81
Ноябрьск (3496)41-32-12
Новосибирск (383)227-86-73
Омск (3812)21-46-40
Орел (4862)44-53-42
Оренбург (3532)37-68-04
Пенза (8412)22-31-16
Петрозаводск (8142)55-98-37
Псков (8112)59-10-37
Пермь (342)205-81-47

Ростов-на-Дону (863)308-18-15
Рязань (4912)46-61-64
Самара (846)206-03-16
Санкт-Петербург (812)309-46-40
Саратов (845)249-38-78
Севастополь (8692)22-31-93
Саранск (8342)22-96-24
Симферополь (3652)67-13-56
Смоленск (4812)29-41-54
Сочи (862)225-72-31
Ставрополь (8652)20-65-13
Сургут (3462)77-98-35
Сыктывкар (8212)25-95-17
Тамбов (4752)50-40-97
Тверь (4822)63-31-35

Тольятти (8482)63-91-07
Томск (3822)98-41-53
Тула (4872)33-79-87
Тюмень (3452)66-21-18
Ульяновск (8422)24-23-59
Улан-Удэ (3012)59-97-51
Уфа (347)229-48-12
Хабаровск (4212)92-98-04
Чебоксары (8352)28-53-07
Челябинск (351)202-03-61
Череповец (8202)49-02-64
Чита (3022)38-34-83
Якутск (4112)23-90-97
Ярославль (4852)69-52-93

Россия +7(495)268-04-70

Казахстан +7(7172)727-132

Киргизия +996(312)96-26-47

эл.почта: tod@nt-rt.ru || сайт: <https://teledoor.nt-rt.ru/>